



*Trends* **INTCO**  
Trends for 2024-2025

# Introduction

For many years, interior design trends have been used as aesthetic aids in our attempts to find some sort of inner peace. There is more and more research that shows the direct influence that our homes have, not only on our moods, but our overall health and well-being.

The pandemic caused a mass migration of activities to the home, and new challenges will keep them there as we head toward 2025. Higher living costs, recessionary markets, and the impact of global warming will all see us continue to do more – and expect more – from the spaces we live in.



# Color

Emerging colors include natural and artificial colors paired together creating a playful collaboration of old and new. Colors are being pushed into new creative collections that focus on everything from the warmth and vitality of a desert landscape to vibrant hues in whimsical botanicals.

The years of dull and muted colors have given way to bright, joyful colors that put a smile on your face.





# Core Colors



Warm and cool tones, chosen with longevity in mind, compliment each other across the color wheel. Muted colors infuse designs with a calming sense of sophistication and harmony. They range from soft pastels to deep, rich earth tones.

# Interior *Colors*



This pallet of multi-seasonal colors are emerging with the intent of bringing joy in the home. Color is a powerful design tool that can makes rooms feel more calm, cheerful, colorful, and dramatic. As we crave more of these emotions, we rely on colors to make space feel more intimate and comfortable.



# Seasonal *Colors*



Seasonal colors are hues that mirror the shades seen in the four seasons of nature. Emerging colors in this trend include a mix of tinted pastels, balancing mid-tones, and transitional brights.

New Trending

# Materials



Painted Bamboo



Burl Wood Vener



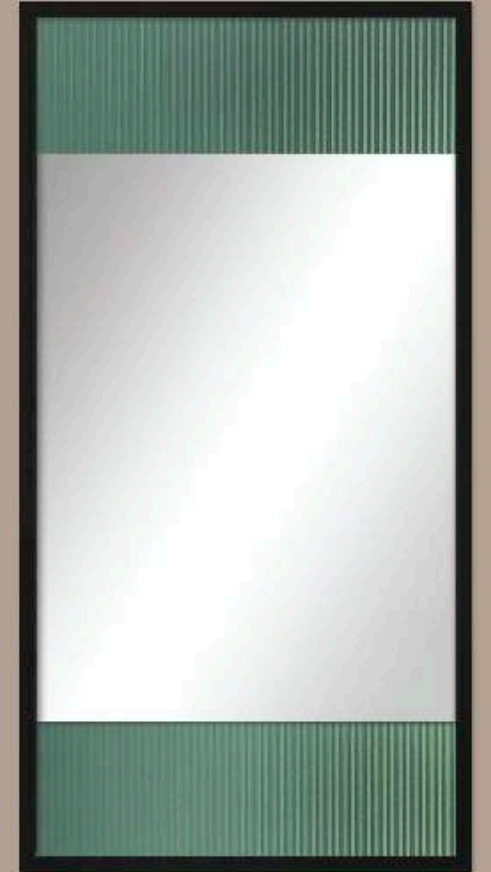
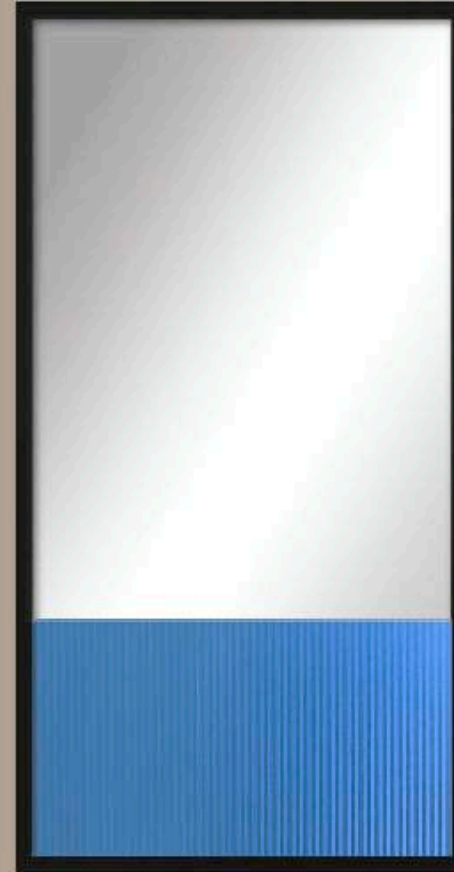
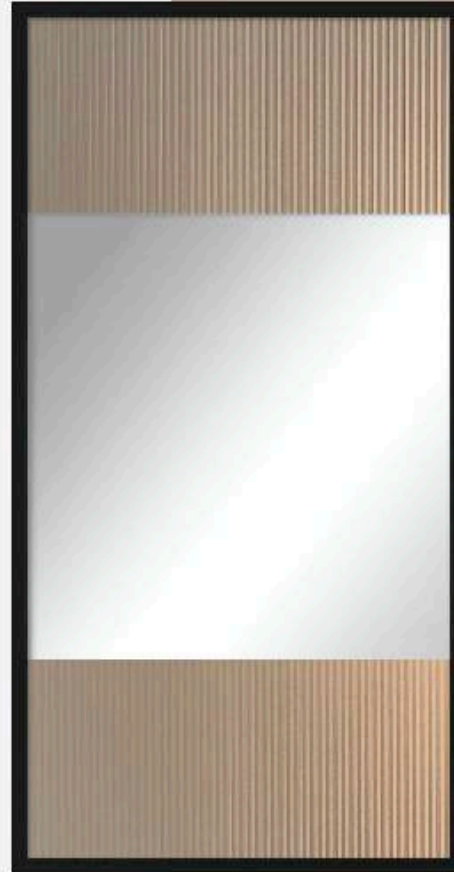
Cork Leather



Man-made Stone

# Tactile Glass

Fully recyclable, glass can also be extremely decorative thanks to colors and textures that convey unique tactile effects to an originally transparent or reflective material. Trending patterns include scallop and fluted finishes.





# Pattern

Surrealism is celebrated in tandem with geometrics. Emerging trends focus on clean lines and basic repetitive shapes. Wall panel slats in a variety of finishes and edges are a strong trend that will continue to develop into 2025.



Ask about out Intco Decor options for both acoustic and traditional wall panels!

# Shape

A curved form is subconsciously read as safe, friendly and welcoming. Future trends predict us seeing more gracious and sensual shapes, curved edges and deep, luxuriant textures.



# Textured White

Tonal and textural white on white combined with natural hand-painted textures or materials. From hand-painted plasters to neutral abstracts prints, warm whites are at the forefront of this trend.





# Dark Wood

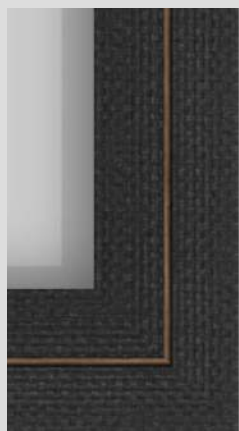
The return of dark wood furniture and decor features smooth finishes with natural luxe appeal. Focused on dark stains and paint finishes with warm undertones create a high-end looking grain and texture.



002-1846



1184-G-06T



7154-WK-B-294



Trending

# Mirrors



From curvy shapes to greek inspired finishes, mirrors are statement piece more than ever in the home.



# Vibrant Art

Art collections focused on up and coming artists and artists of color. Gone are the days of high-brow art collecting dominating the scene. Collections featuring diversity of our world and unique perspectives will be most popular.





B&W

Emerging art trends include black and white monochromatic colors and textures in playful contemporary broad brush strokes. Modern pallet knife details in neutral hues compliment and create contrast to artwork with lots of hand-painted details.



# Modern Toile

A French word meaning canvas or linen cloth, toile is a type of fabric that has been a popular decorating element since the 1700's. With traditional trends emerging, this timeless detailed art style compliments and away of decor styles.





# Muted Coastal

Also known as a coastal revival, this easy breezy decor style features muted cool hues paired with traditional and abstract coastal inspired artwork. Neutral colors blend comfort and sophistication in oversized canvas, or framed artwork in natural materials like cane and rattan weaving.





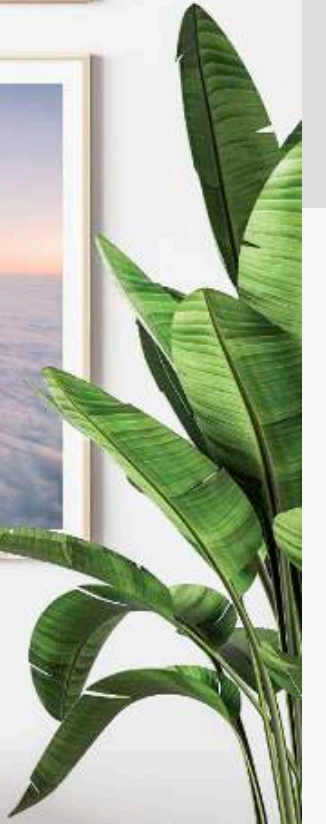
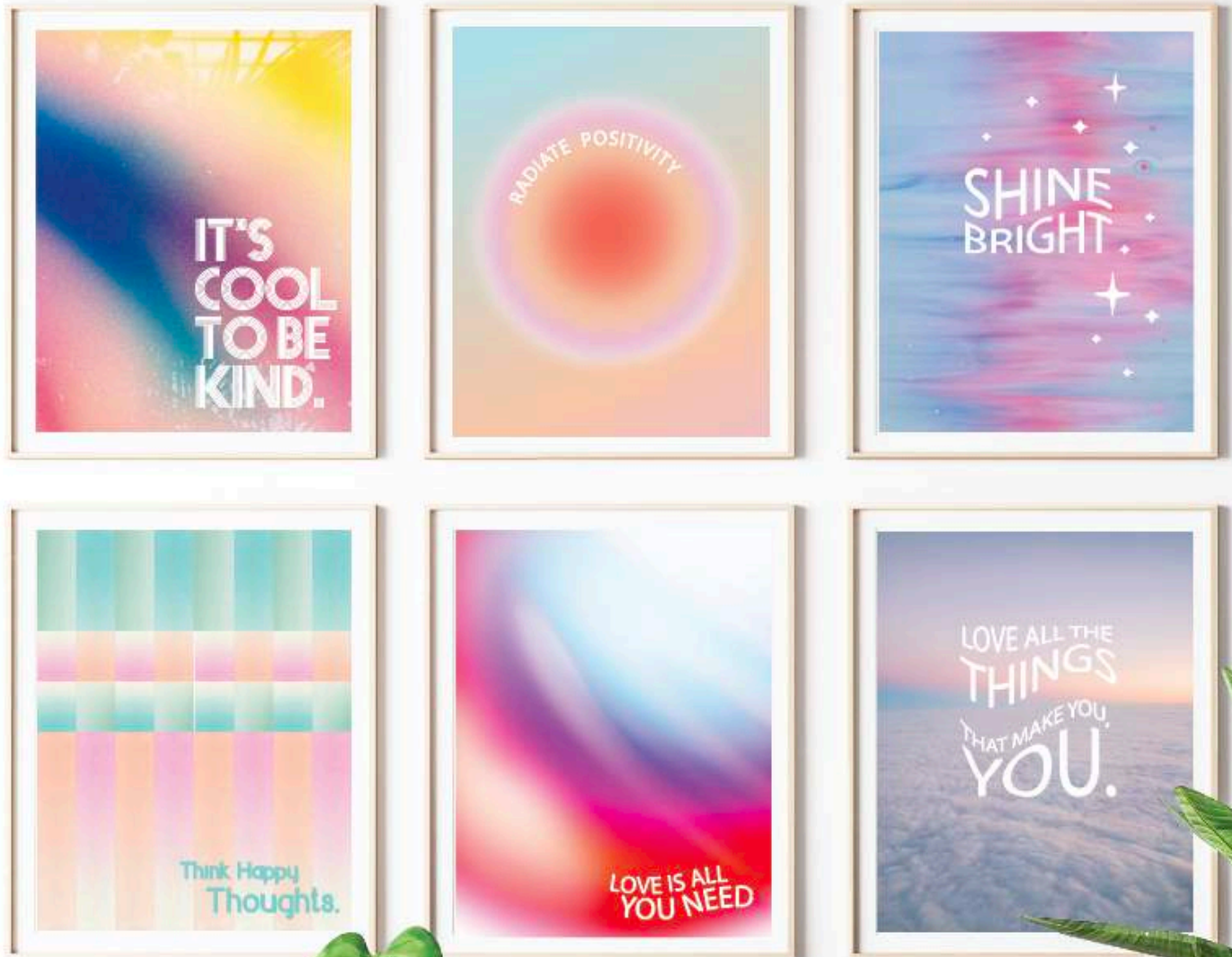
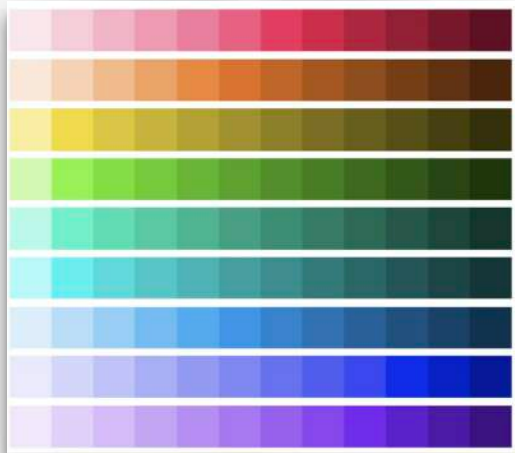
# Plants

Botanical plant trends in both decor and art include the agave and pandan plant. Both native to hot weather, these tropical-like species compliment a variety of decor styles.



# Gradient Art

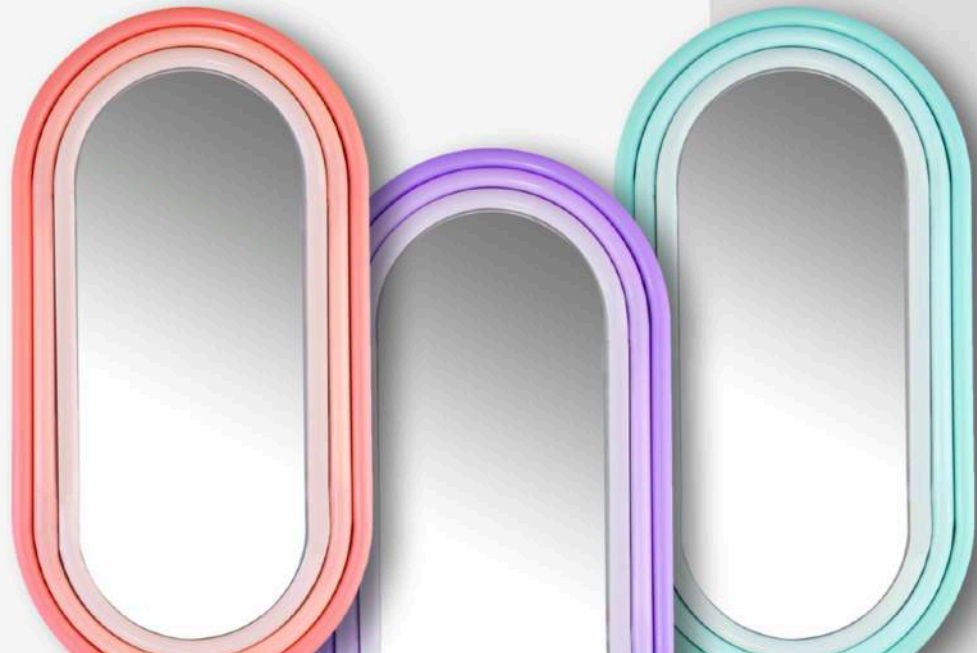
Gradation is the technique of gradually transitioning from one hue to another, or from one shade to another. Gradients can include textures as well. Space, distance, atmosphere, volume, and curved or rounded forms are often creatively included in this emerging trend. Gradients provide the perfect background for trending sentiments and icons.





# Hyper *Brights*

What better way to celebrate life than with bright and bold colors? From influencers to fashion icons, it seems like everyone is stepping out of the house in bright neon hues. To play into this emerging trend, focus on layered bright colors in geometric shapes, or clean lines paired with natural woodgrains.





# Floral Therapy

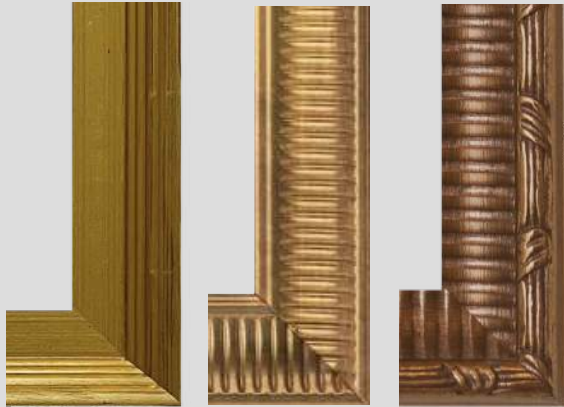
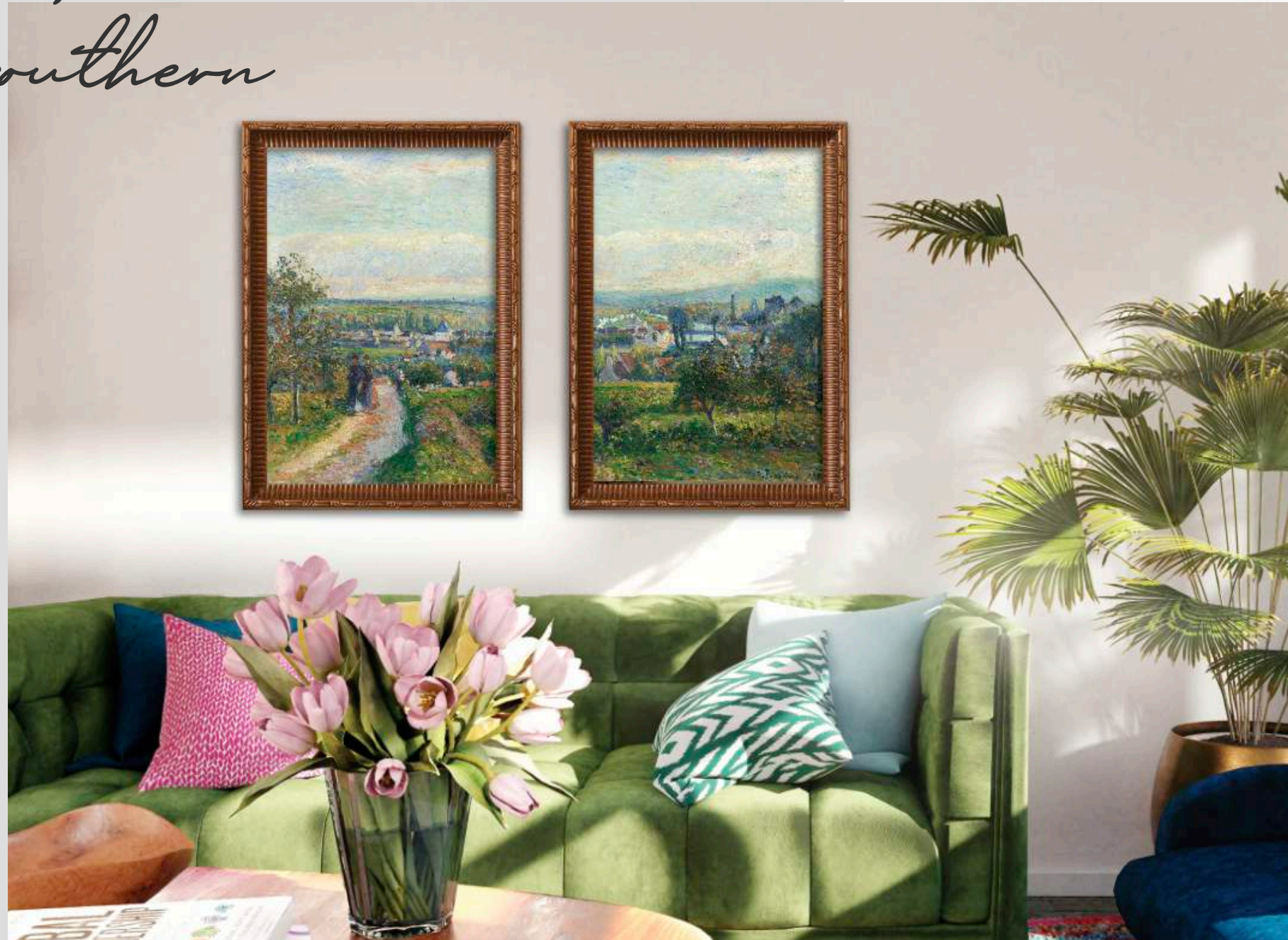
Flower therapy is a multidimensional approach to healing that includes exposure to botanicals to improve our emotional state. Focused on improving health and balance, time spent surrounded by inspirational plants and flowers can be healing on multi-levels. When outdoor time is scarce, we turn to inspirational imagery to bring peace and serenity in our homes. This emerging trend includes abstract imagery, brightly colored pallet knife or broad brush strokes, and antique inspired illustrations.





# Contemporary *Southern*

Souther style features modern contemporary furniture paired with traditional and preserved values in textiles and art. Details include heirloom icons and timeless patterns. Toile, plaid, seersucker, and traditional florals are just a few additional patterns and motifs that fit this trend. Frames include traditional patterns in antique brass and gold colors.





# Retro Mix

The retro mix trend is focused on Mid Century style and design fused with 1960s - 80's colors and finishes. This unique combination updates this trend to be a playful and whimsical way to embellish and decorate the home.

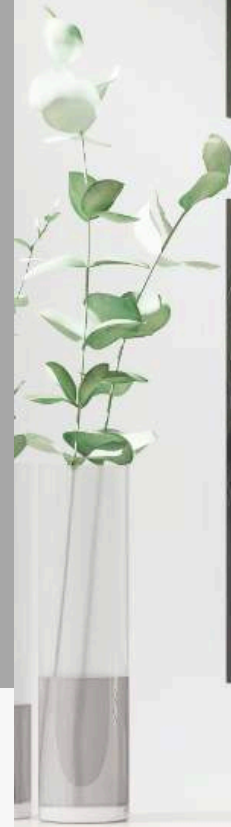
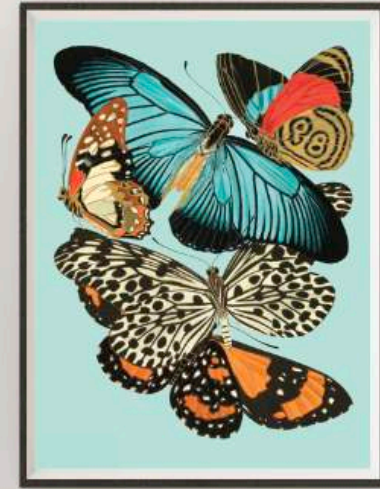




# Papillion

The butterfly motif has fluttered, once again, back into home and fashion trends.

There are few motifs in fashion as ubiquitous as the delightful butterfly. First trending in the 1930's, this feminine inspired icon has timeless appeal. Emerging trends include unique metallic texture and vintage inspired illustrations.



# Sun Soaked

From full-sun imagery to vintage inspired colors, photography trends are focused on capturing the warmth and appeal of sunny days. Aged minty green and yellow hues compliment this adventurous trend focused on back-lit subject matter and lovely landscape scenes.





# Antique Ambiance

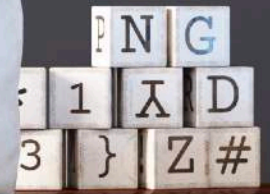
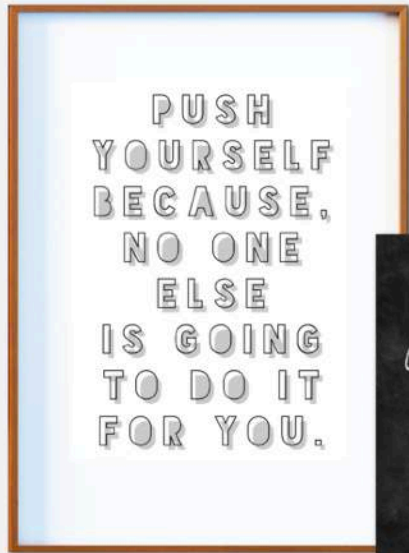
Homes are a mix of our personal style, and more and more consumers are focusing on timeless pieces with everyday appeal. As we reflect on bygone era design and quality, we seek one-of-a-kind pieces to mix with modern homes and appliances. To compliment this trend, focus on sleek modern frames or slim warm weathered woods with heirloom inspiration.





# Just my Type

Black and white text creates the ultimate contrast, giving statement art emphasis and meaning. This timeless trend focuses on everything from serious statements to humorous whimsy. Emerging type includes vintage fonts, well-balanced negative space, and text focused on self-motivation and love.

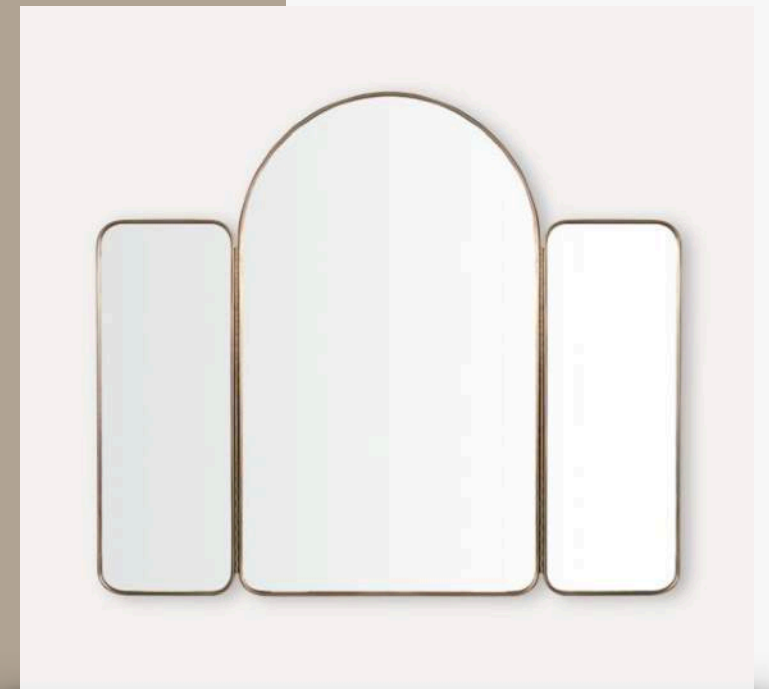




Quadriptych: Set of four pieces

# Sets

Sets are all the rage, but did you know they have classic names based on quantity? Diptych sets of two grew in popularity the last few years, so it's no surprise triptych sets of three soon followed. What's emerging for next year? Give a tetraptych or a quadriptych a try! Both representing a set of four, these trending sets are a great item for boxed sets or tray box packaging.



Triptych: Set of three pieces



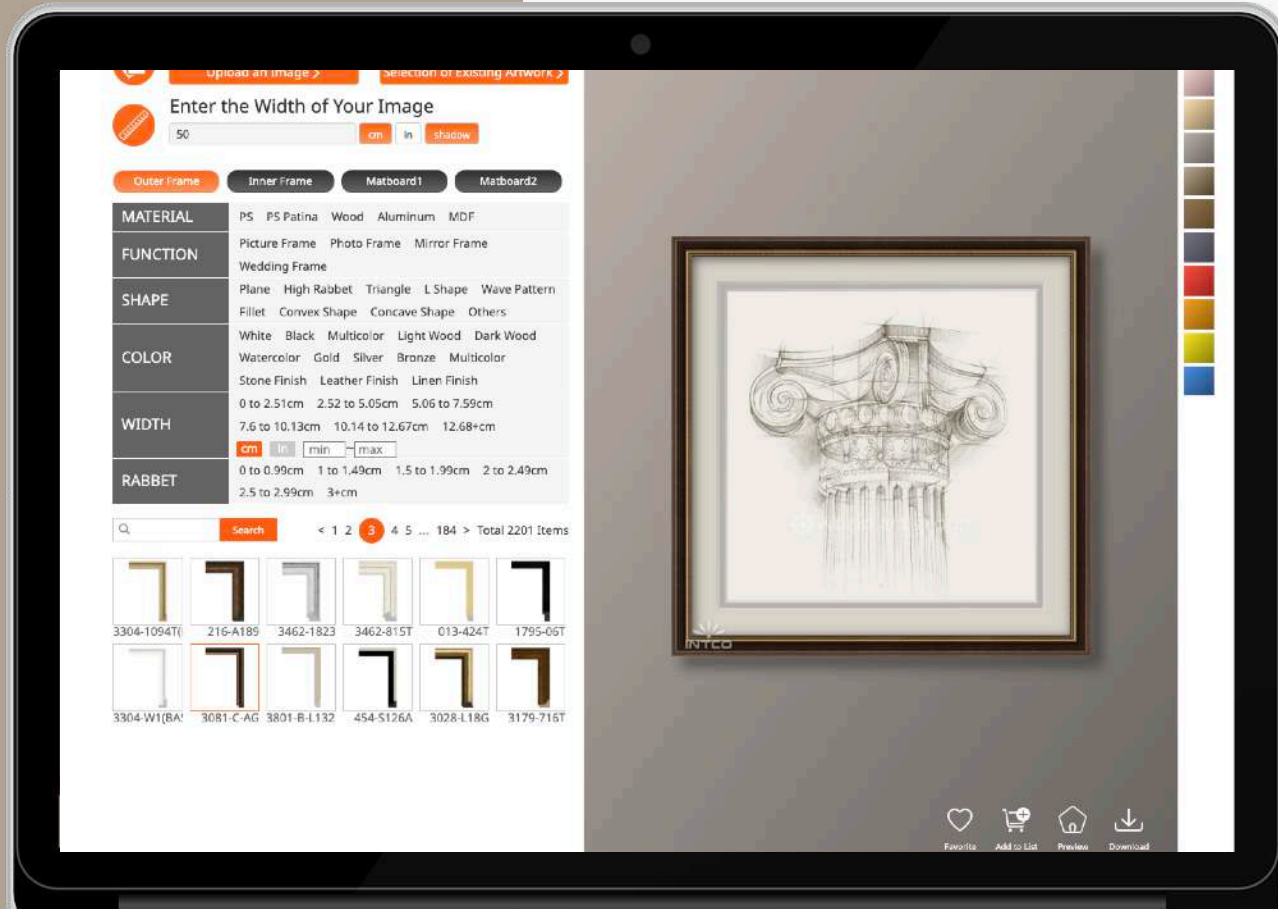
Inspired by traditional values and patterns, antique golds and classic blacks are emerging in unique patterns and textures. Classic woodgrains continue to grow in popularity with warm cherry undertones. Burl wood will continue to emerge in decor and furniture.



*Trending*  
profiles

11th Century linear Dutch

<https://www.intco-framing.com/framing-studio/>



Visit us *Online*

Our virtual framing studio has everything you need to mockup your favorite art selections and mirrors.





*Thank You*

[www.intco-decor.com](http://www.intco-decor.com)